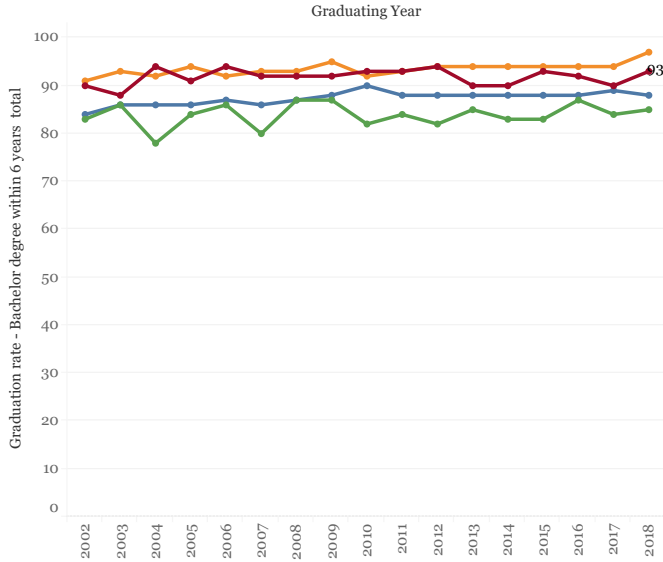


# HAVERFORD COLLEGE

## Outcomes Dashboard (page 1 of 2)

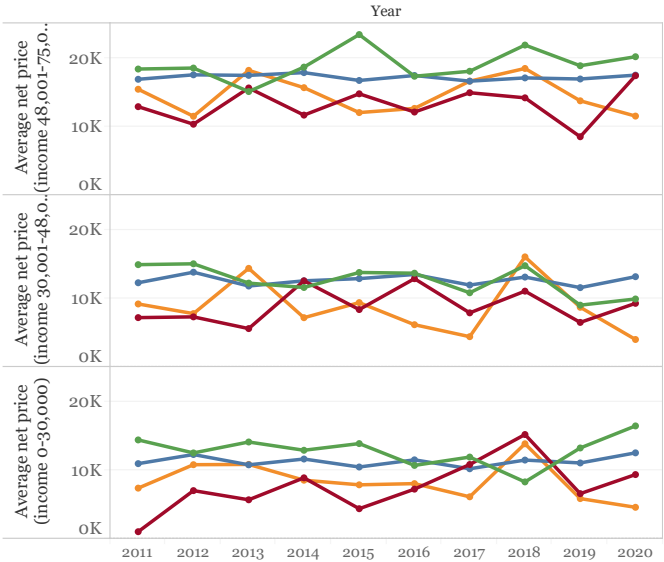
### Comparative 6-year Completion Rates



Data source: IPEDS Graduation rate survey  
 Notes: The Peer Group used in this figure includes 49 Liberal Arts institutions representing a combination of Top 50 US News institutions and PCLA institutions.

Institution Name  
 ■ Bryn Mawr College ■ Peer Group Median  
 ■ Haverford College ■ Swarthmore College

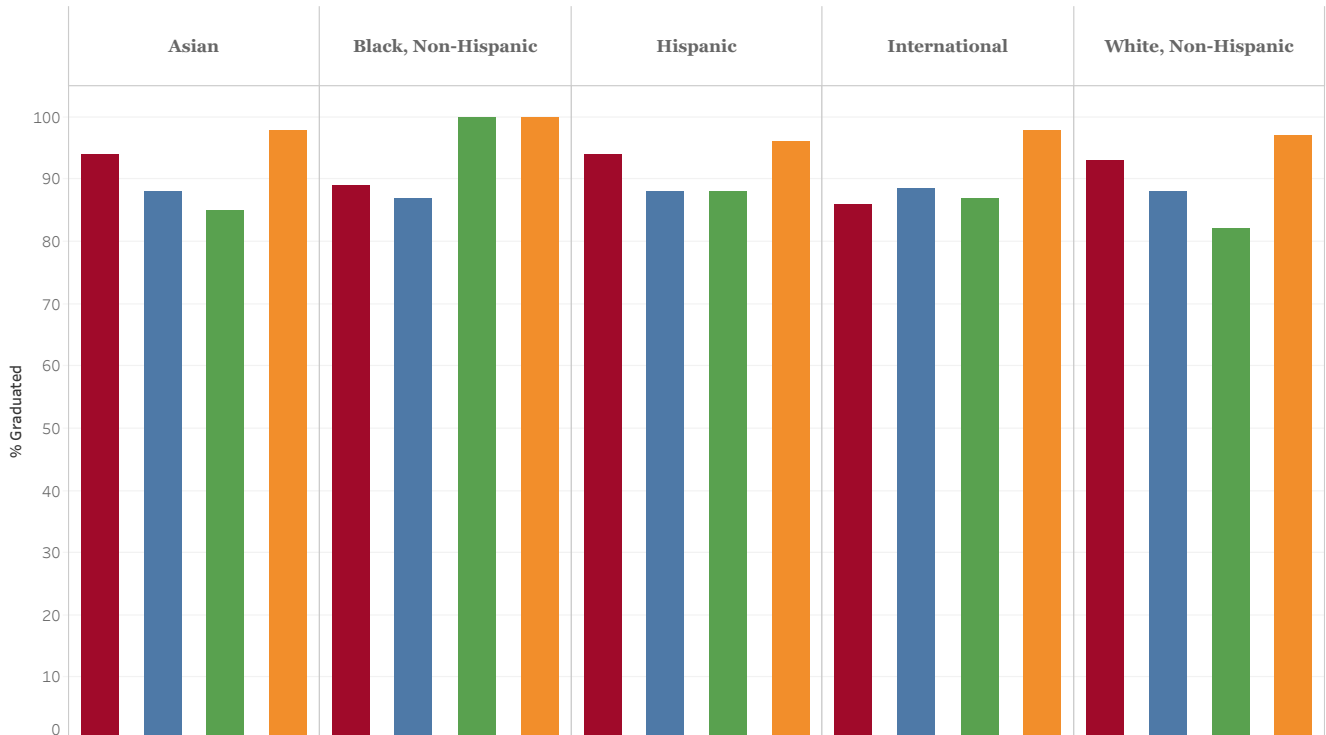
### Student Net Price by Family Income



Data Source: IPEDS  
 Notes: The Peer Group used in this figure includes 49 Liberal Arts institutions representing a combination of Top 50 US News institutions and PCLA institutions.

Institution Name  
 ■ Bryn Mawr College ■ Peer Group Median  
 ■ Haverford College ■ Swarthmore College

### Comparative 6-year Grad Rates by Race/Ethnicity - Graduating Class of 2018 (2014 entering cohort)



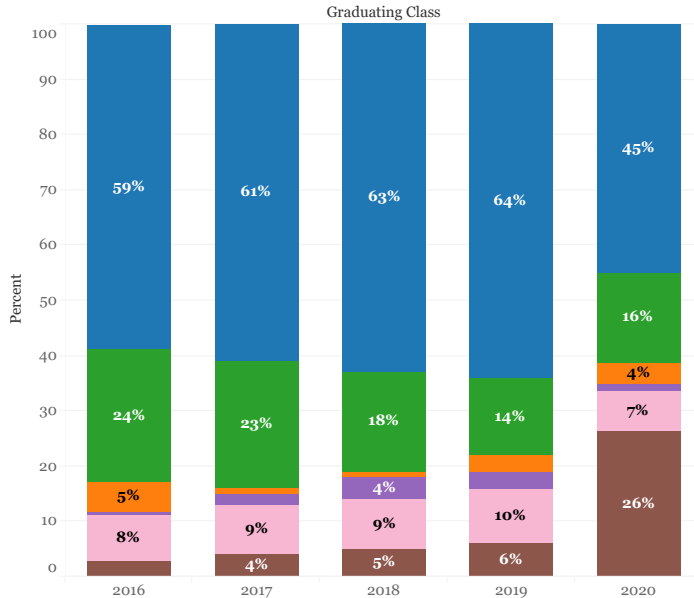
Data Source: IPEDS  
 Notes: The Peer Group used in this figure includes 49 Liberal Arts institutions representing a combination of Top 50 US News institutions and PCLA institutions.

Institution Name  
 ■ Haverford College ■ Peer Group Median ■ Bryn Mawr College ■ Swarthmore College

# HAVERFORD COLLEGE

## Outcomes Dashboard (page 2 of 2)

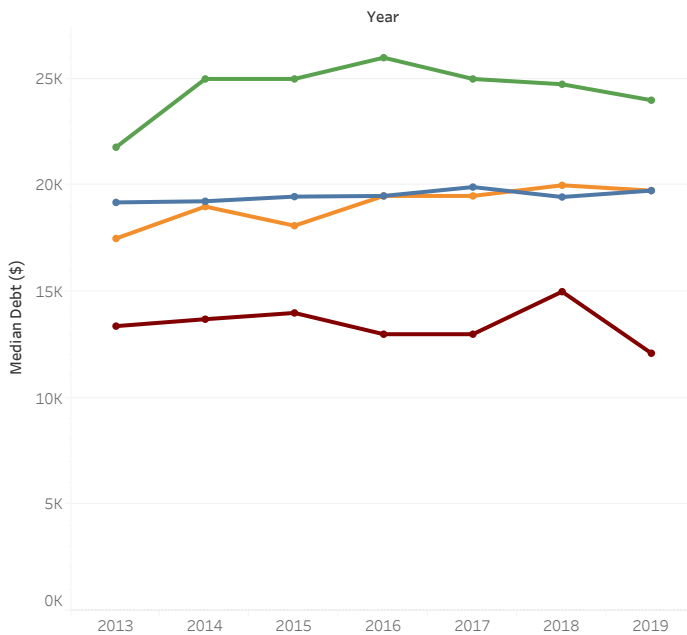
### First Destinations



Results are drawn from CCPA's First Destination data collection which surveys graduating seniors about their post-graduation plans. Reported percentages reflect the entire graduating class with the "unknown" category representing students who did not submit a response. The Class of 2020 graduated early in the COVID-19 pandemic.

- Measure Names
- First Destination: Employed
  - First Destination: Graduate School
  - First Destination: Fellowships
  - First Destination: Volunteering
  - First Destination: Seeking Employment/Other
  - First Destination: Unknown

### Median Graduate Debt



Data Source: College Scorecard; National Student Loan Data System  
Notes: The Peer Group used in this figure includes 49 Liberal Arts institutions representing a combination of Top 50 US News institutions and PCLA institutions.

- Institution Name
- Bryn Mawr College
  - Haverford College
  - Peer Group Median
  - Swarthmore College

### Baccalaureate Origins

Listed rankings are based upon the rate of Doctoral degree production during the indicated timeframe and is determined by dividing the total number of Baccalaureate degrees awarded by an institution by the number of Doctoral degrees awarded.

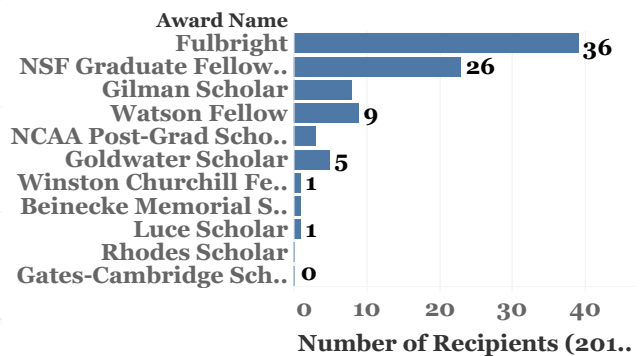
Haverford College, between 2008 and 2017, produced Doctoral degrees at a rate of 14.35% and ranks tenth among all institutions.

Institution Name	Total BA/BS Degrees (2003-12)	Total Doctoral Degrees (2008-17)	Rate of Doctoral Degree production
California Institute of Technology	2,170	924	42.58
Harvey Mudd College	1,710	486	28.42
Swarthmore College	3,757	810	21.56
Reed College	3,032	634	20.91
Massachusetts Institute of Technology	11,642	2,230	19.15
Carleton College	4,761	852	17.90
New College of Florida	1,503	246	16.37
Grinnell College	3,778	572	15.14
University of Chicago	11,639	1,675	14.39
HAVERFORD COLLEGE	2,969	426	14.35
Pomona College	3,815	541	14.18
Harvard University	17,938	2,531	14.11
Princeton University	11,564	1,614	13.96
Williams College	5,315	722	13.58
Bryn Mawr College	3,127	415	13.27
Yale University	13,405	1,724	12.86
St. John's College	1,043	131	12.56
Oberlin College	7,117	863	12.13
Rice University	8,156	975	11.95
Stanford University	17,264	2,061	11.94
Amherst College	4,444	530	11.93
Brown University	15,563	1,790	11.50
Macalester College	1,260	146	11.60

Data Source: National Science Foundation

### Awards and Fellowships

2012-2021



Number of Recipients (2012-2021)