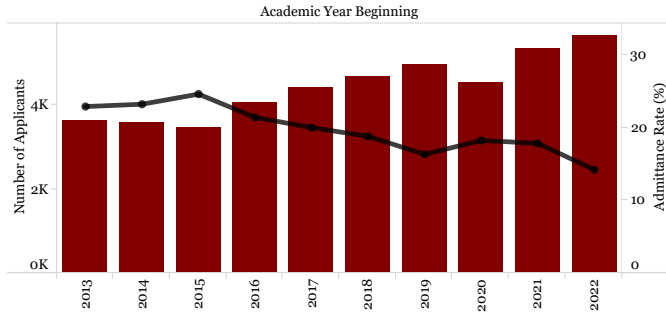


HAVERFORD COLLEGE

Institutional Dashboards (page 1 of 2)

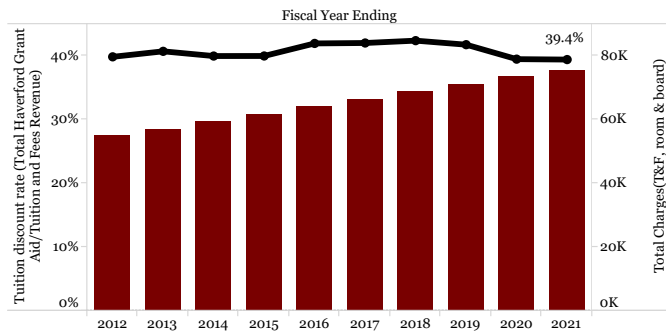
Admission

Number of applications (bar) with admit rate (line)



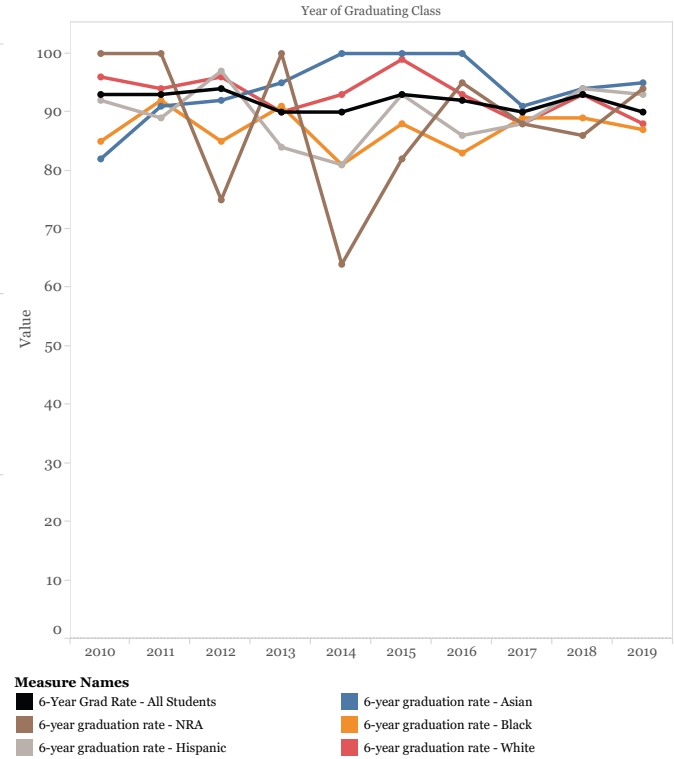
Charges & Discount Rate

Total charges per student FTE (bar) indicating net tuition, fees, room & board per student FTE with tuition discount rate (line)



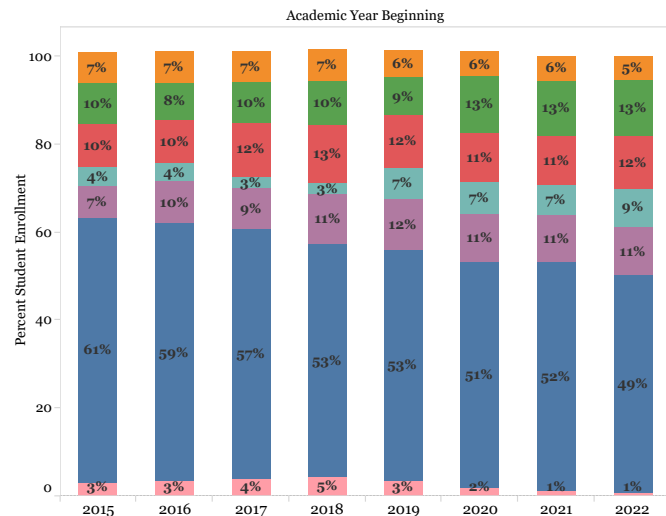
Completions

6-year Grad Rate by Race/Ethnicity



Enrollment

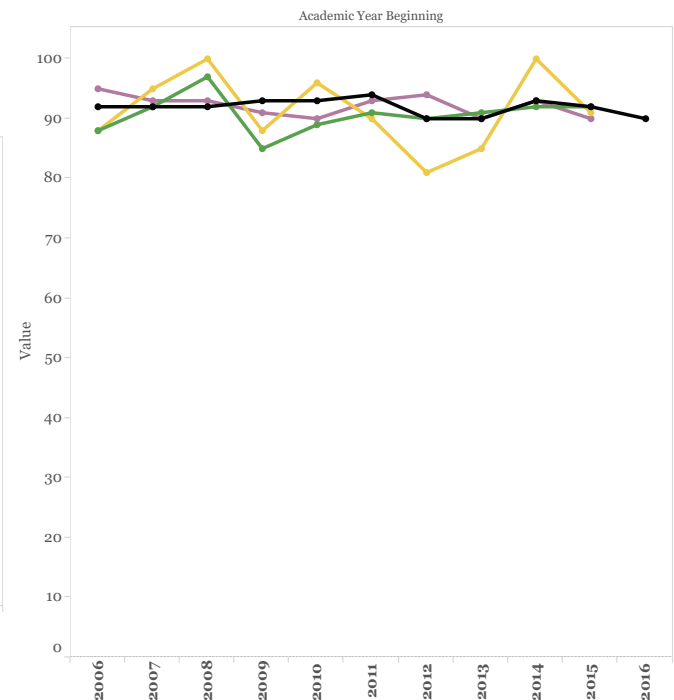
Opening Fall Student enrollment by percentage Race/Ethnicity*



*Fall enrollment numbers presented here represent IPEDS reported numbers.



6-year Grad Rate by Financial Aid Category

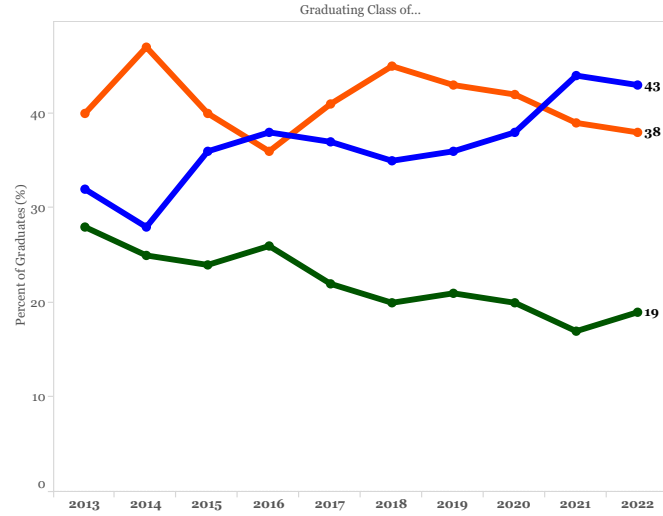


Haverford College

Institutional Dashboards (page 2 of 2)

Completions by Academic Division

Percent graduating student majors by academic division

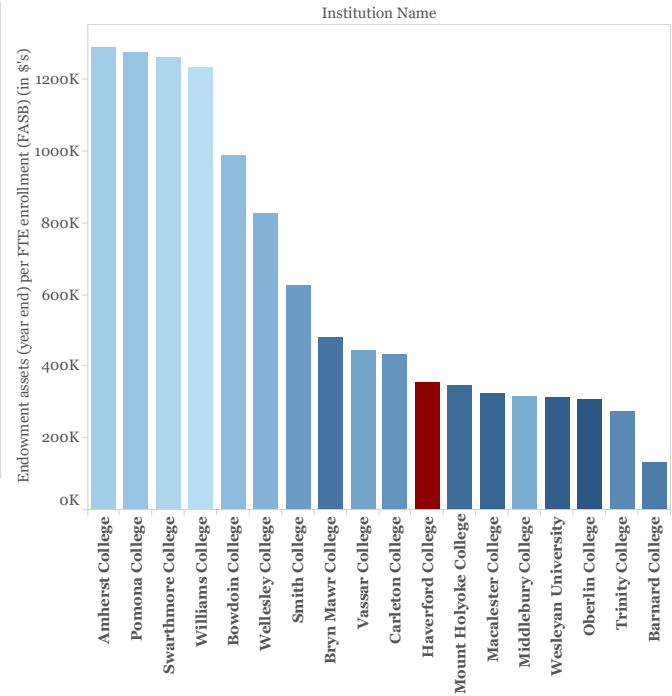


Note: Percentages reported are inclusive of students who graduated with multiple majors
Source: Registrar

Measure Names
■ % of Grad Class with Humanities major
■ % of Grad Class with Social Science major
■ % of Grad Class with Natural Science major

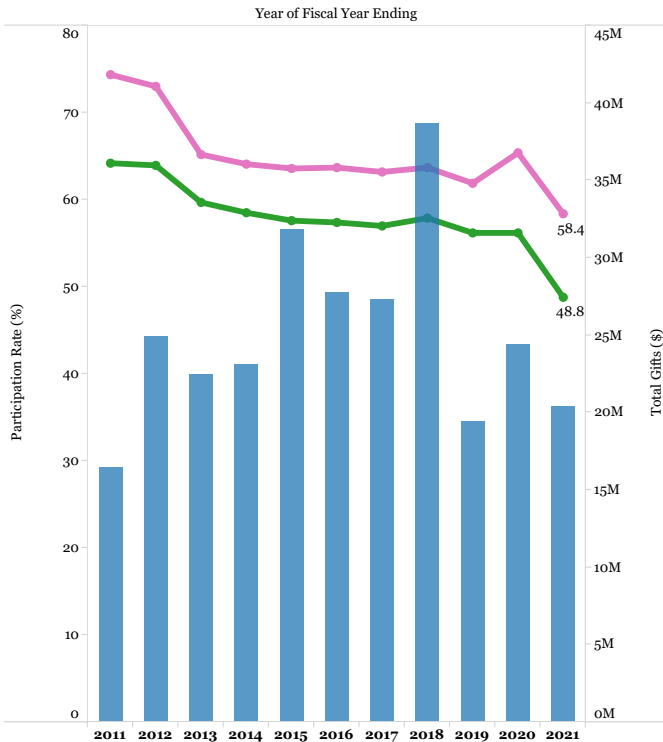
Endowment

Endowment Assets per Student FTE, selected peer institutions
Fiscal Year 2020



Giving

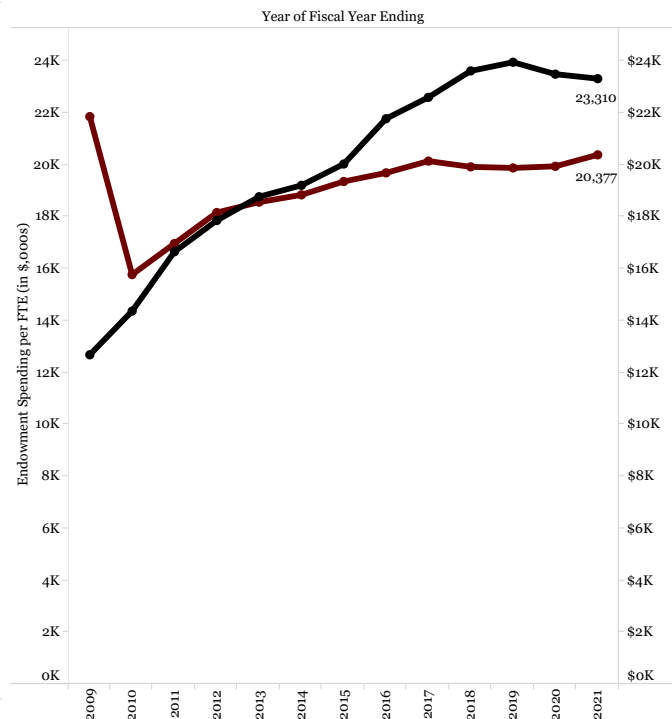
3-year and 5-year alumni participation rates (lines) with total gifts (bar)



Measure Names
■ 3-year Alumni participation rate
■ 5-year Alumni participation rate
■ Total Gifts (\$)

Financial Aid

Student aid and endowment spending, per student FTE



Measure Names
■ Endowment Spending per FTE
■ Student Aid per FTE