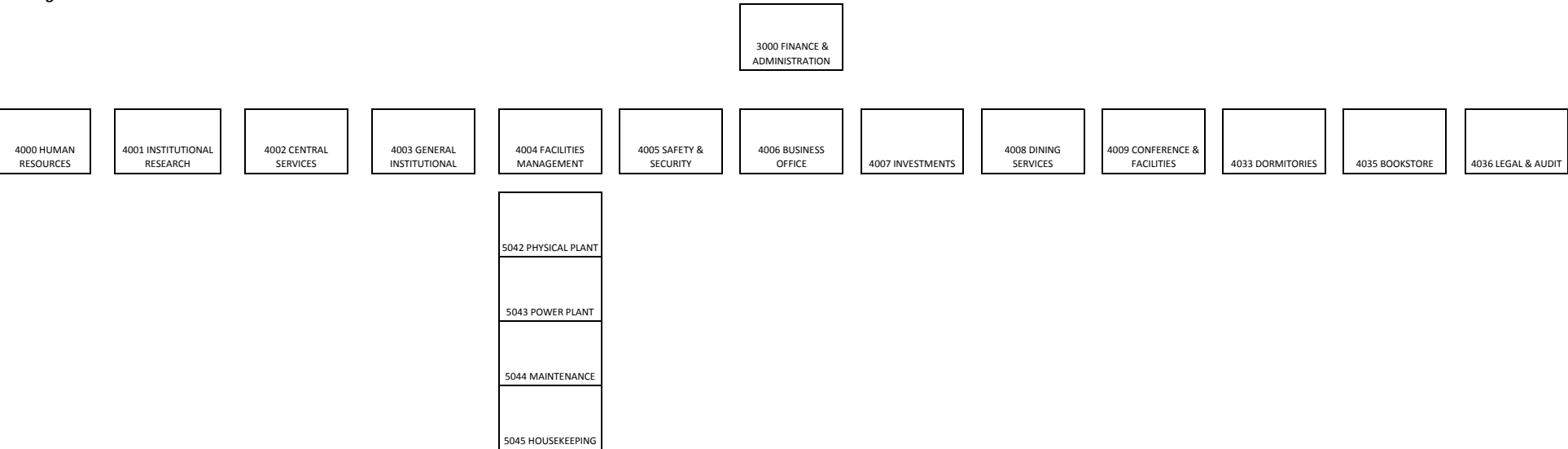


Haverford College
KFS Organizational Structure

2000 FOUNDATION, CORPORATE, GOVT RELATIONS	2001 ADVANCEMENT SERVICES - STEWARDSHIP	3000 FINANCE & ADMINISTRATION	3001 OFFICE OF THE DEAN	3002 INSTITUTIONAL ADVANCEMENT	3003 INSTRUCTIONAL & INFORMATION TECHNOLOGY S	3004 DEAN OF ADMISSIONS	3005 PROVOST	3006 PRESIDENT
		4000 HUMAN RESOURCES	4010 STUDENT SERVICES	4016 VP INSTITUTIONAL ADVANCEMENT	4021 IITS INSTRUCTIONAL SUPPORT	4023 ADMISSIONS & FINANCIAL AID	4024 HUMANITIES	
		4001 INSTITUTIONAL RESEARCH	4011 INTERNATIONAL STUDENT SERVICES	4017 DEVELOPMENT	4022 IITS GENERAL & ENTERPRISE		4025 SOCIAL SCIENCES	
		4002 CENTRAL SERVICES	4012 DEAN GENERAL	4018 ALUMNI RELATIONS & ANNUAL GIVING			4026 NATURAL SCIENCES	
		4003 GENERAL INSTITUTIONAL	4013 ADVISING	4019 ADVANCEMENT SERVICES			4027 LIBRARY	
		4004 FACILITIES MANAGEMENT	4014 BUSES	4020 COMMUNICATIONS			4028 ATHLETICS	
		4005 SAFETY & SECURITY	4015 DIVERSITY LEADERSHIP (FORMERLY MULTICULT)				4029 CENTER FOR PEACE & GLOBAL CITIZENSHIP	
		4006 BUSINESS OFFICE	5035 HONORS COMMITTEE				4030 HURFORD CENTER FOR ARTS AND HUMANITIES	
		4007 INVESTMENTS	5036 DEAN OF INTERNATIONAL PROGRAMS				4031 INSTRUCTIONAL SUPPORT	
		4008 DINING SERVICES	5037 CAREER DEVELOPMENT				4037 EDUCATION PROGRAM	
		4009 CONFERENCE & FACILITIES					4038 WRITING PROGRAM	
		4033 DORMITORIES						
		4035 BOOKSTORE						
		4036 LEGAL & AUDIT						

Haverford College
KFS Organizational Structure



Haverford College
KFS Organizational Structure

3001 OFFICE OF THE
DEAN

4010 STUDENT
SERVICES

4011 INTERNATIONAL
STUDENT SERVICES

4012 DEAN GENERAL

4013 ADVISING

4014 BUSES

4015 DIVERSITY
LEADERSHIP (FORMERLY
MULTICULTURAL
AFFAIRS)

5035 HONORS
COMMITTEE

5036 DEAN OF
INTERNATIONAL
PROGRAMS

5037 CAREER
DEVELOPMENT

Haverford College
KFS Organizational Structure

